

Annual Flu Vaccine Stars Improvement Program



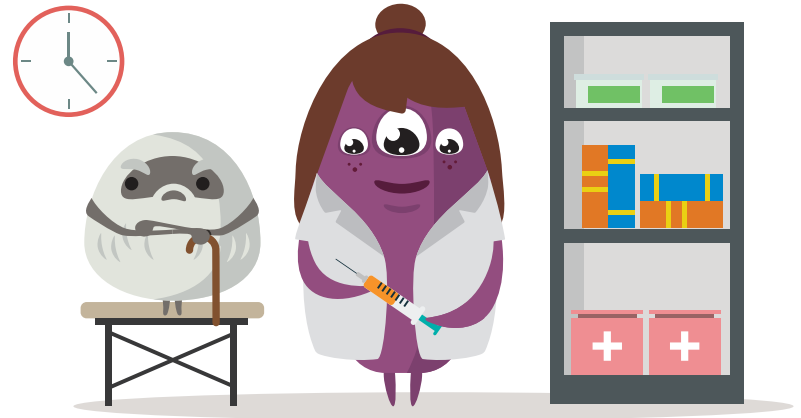
Above and Beyond Protection - Let our pharmacists support you to ensure your population is protected from the flu.

What is it?

Every flu season is different from the last. It is important that your members get their flu shot before the flu season begins, so they can remain healthy and safe.

For the last five flu seasons, the influenza vaccine was on average 45% effective for the population as a whole.

For seniors, the vaccine plays a crucial role in preventing hospitalizations. Despite the vaccine's effectiveness, seniors are not universally compliant. But providers can play a crucial role in the decision to receive an annual flu vaccine.



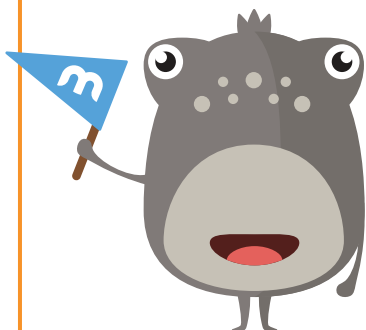
How can we help?

myMTMcare associates are experienced in connecting your members to our pharmacists, right from the comfort of their own homes. This way members will be able to ask any questions they may have about the importance of an annual flu shot, and learn from a medical professional.

All we need from you is your population list, so that we can...

- Find out which members of your population are most at-risk
- Segment your base to find opportunities
- Build a budget that fits your goals
- Launch a targeting call campaign

SIP Success Stats



For all of 2019, our pharmacists recommended Flu Vaccines to **1852 patients**. We had a success rate of nearly **33%**!

33%

mymtmcare

Call us toll free at (866) 216-2819 or email us at info@mymtmcare.com